

**JESSEE FISH**  
ART DIRECTOR



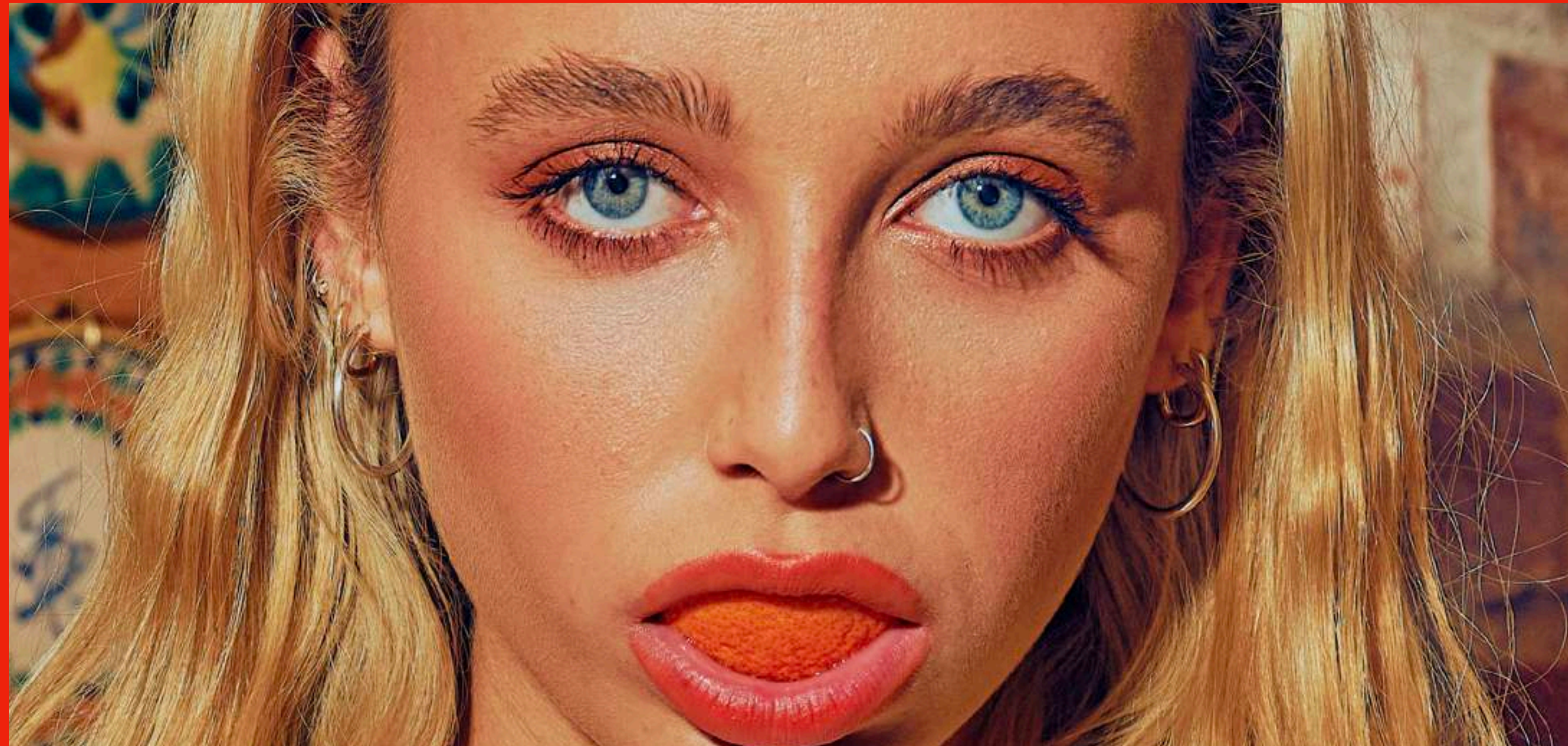
**SELECTED WORK**

**Jessee Fish** is a Chilean art director, designer, and human bean based in LA. She feels strongly about 80s synth-pop and the plight of the bees.

Don't be shy — say hi.

[JESSEEFISH@GMAIL.COM](mailto:JESSEEFISH@GMAIL.COM)





EMMA CHAMBERLAIN





DIRECTED BY JESSEE FISH FOR EMMA CHAMBERLAIN — PHOTOGRAPHER JACK STRUTZ — HAIR LAURA POLKO — MAKEUP KELSEY DEENIHAN — WARDROBE EMMA'S OWN







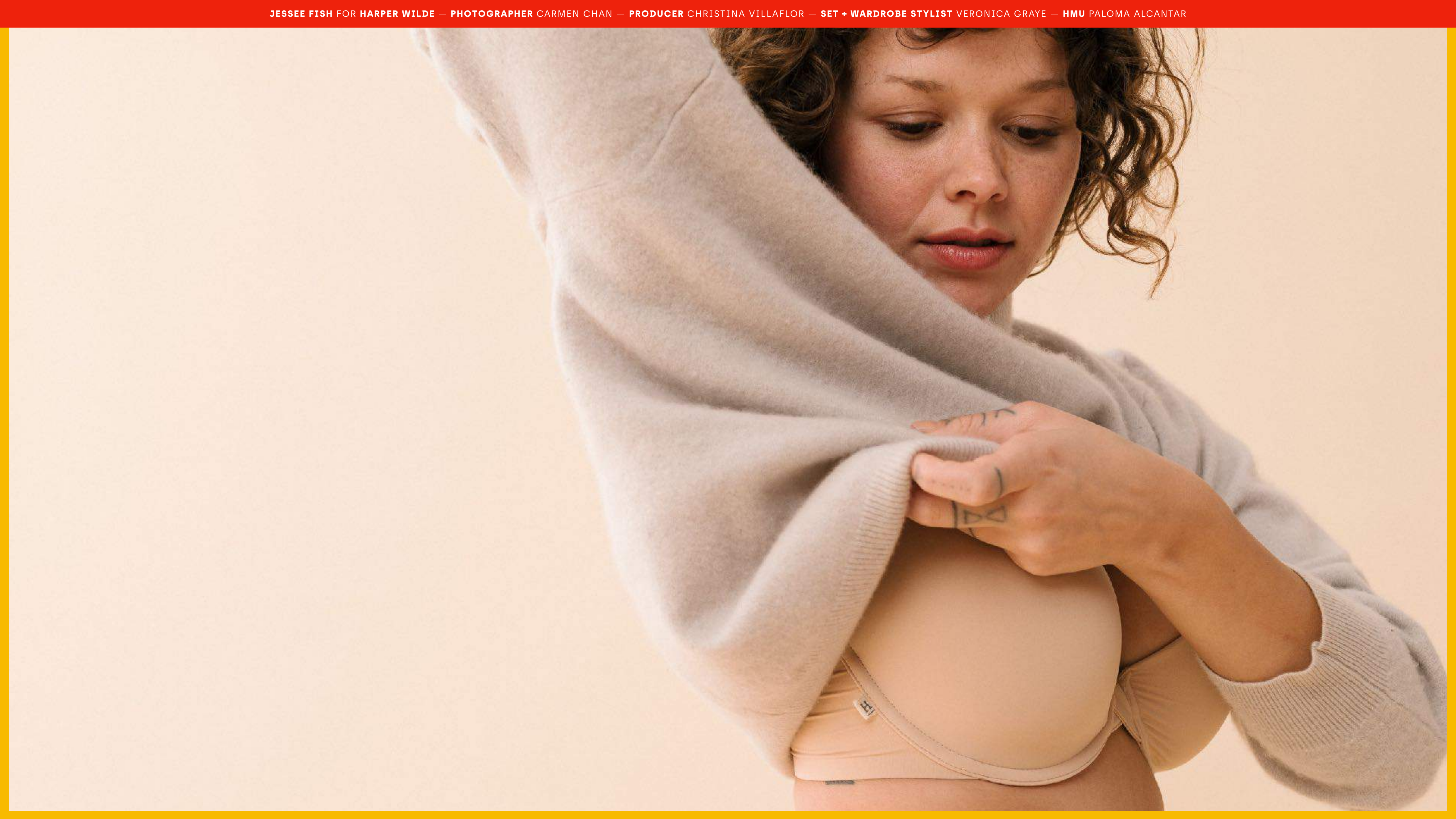


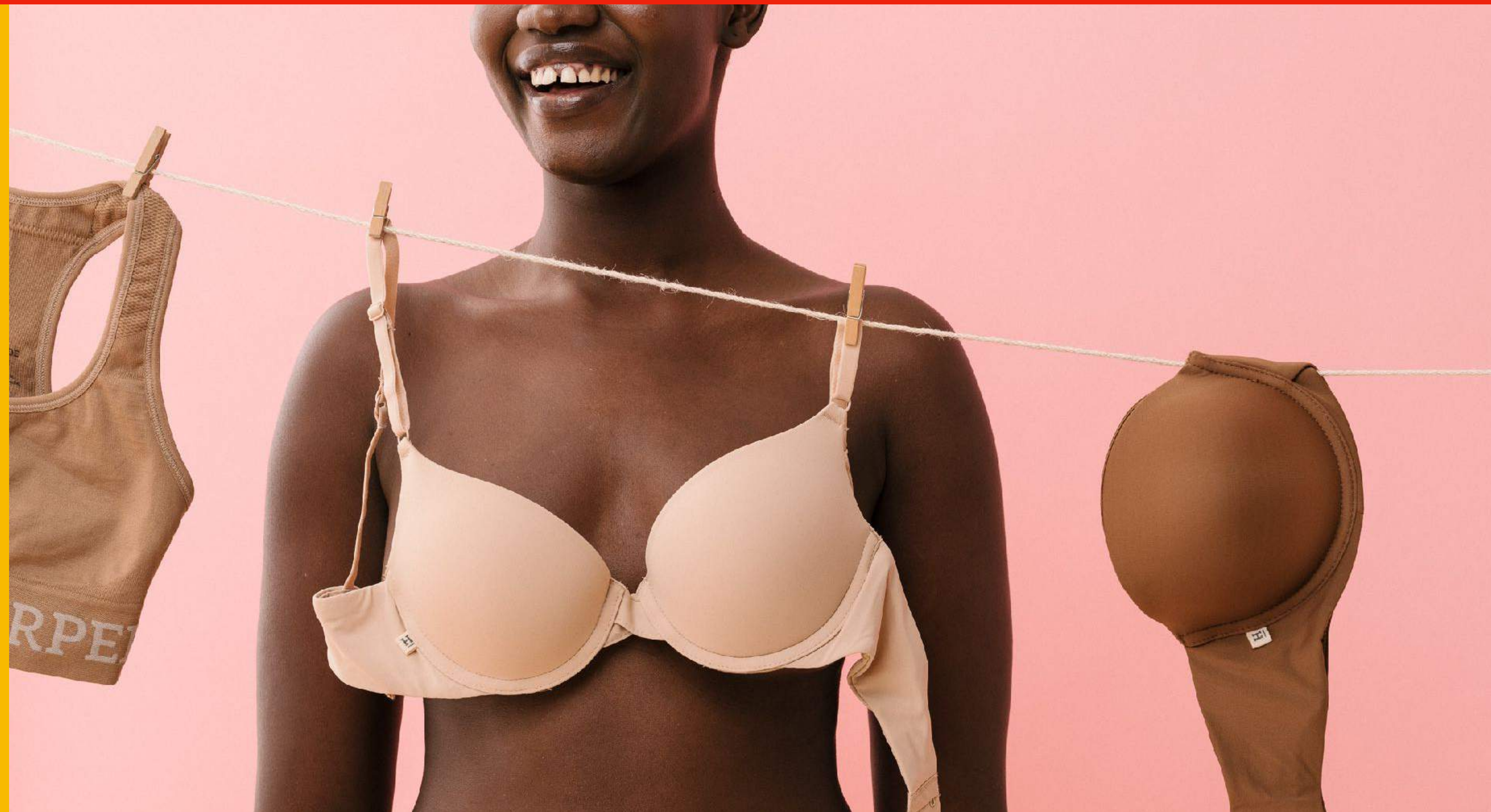




**HARPER WILDE**

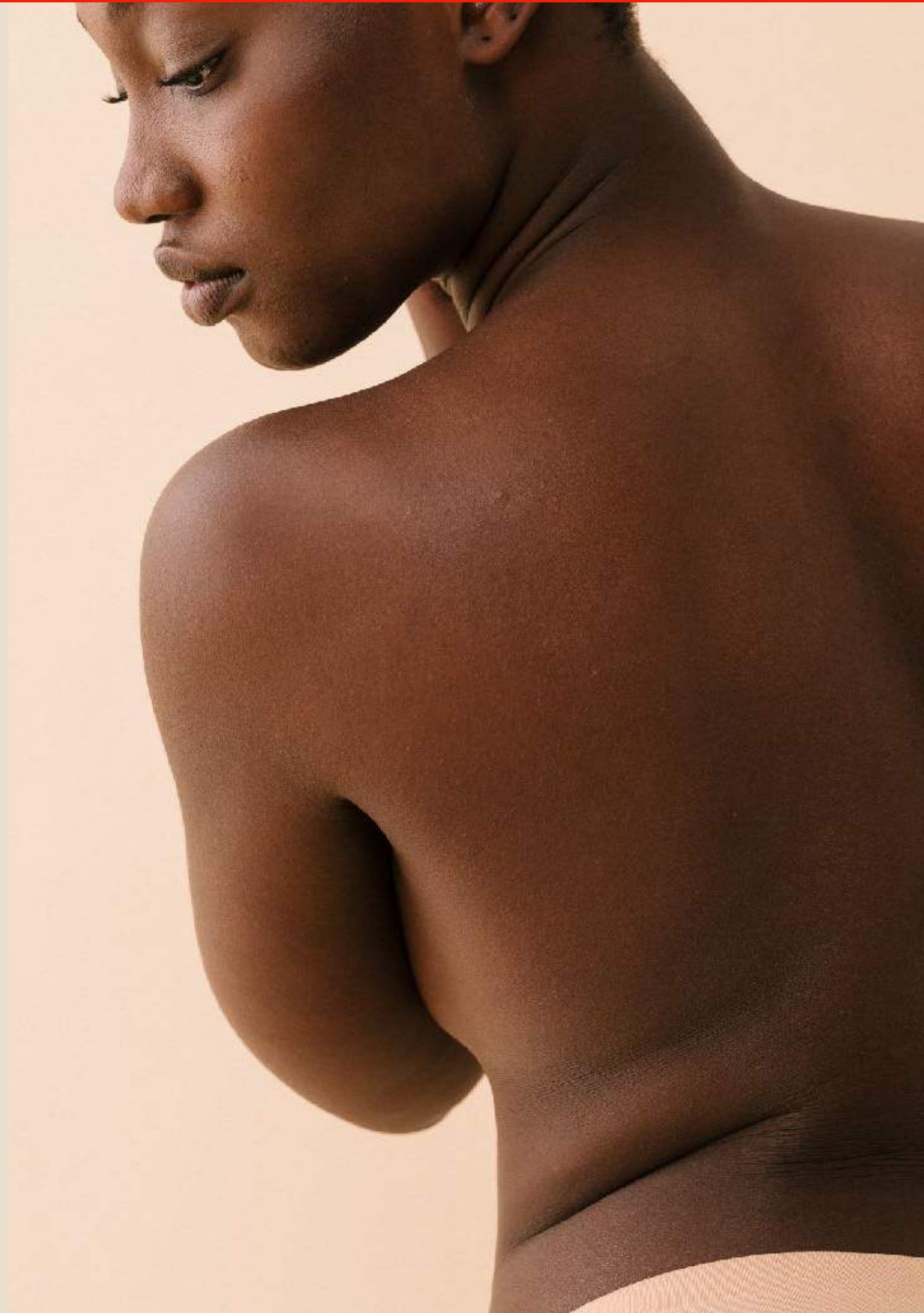
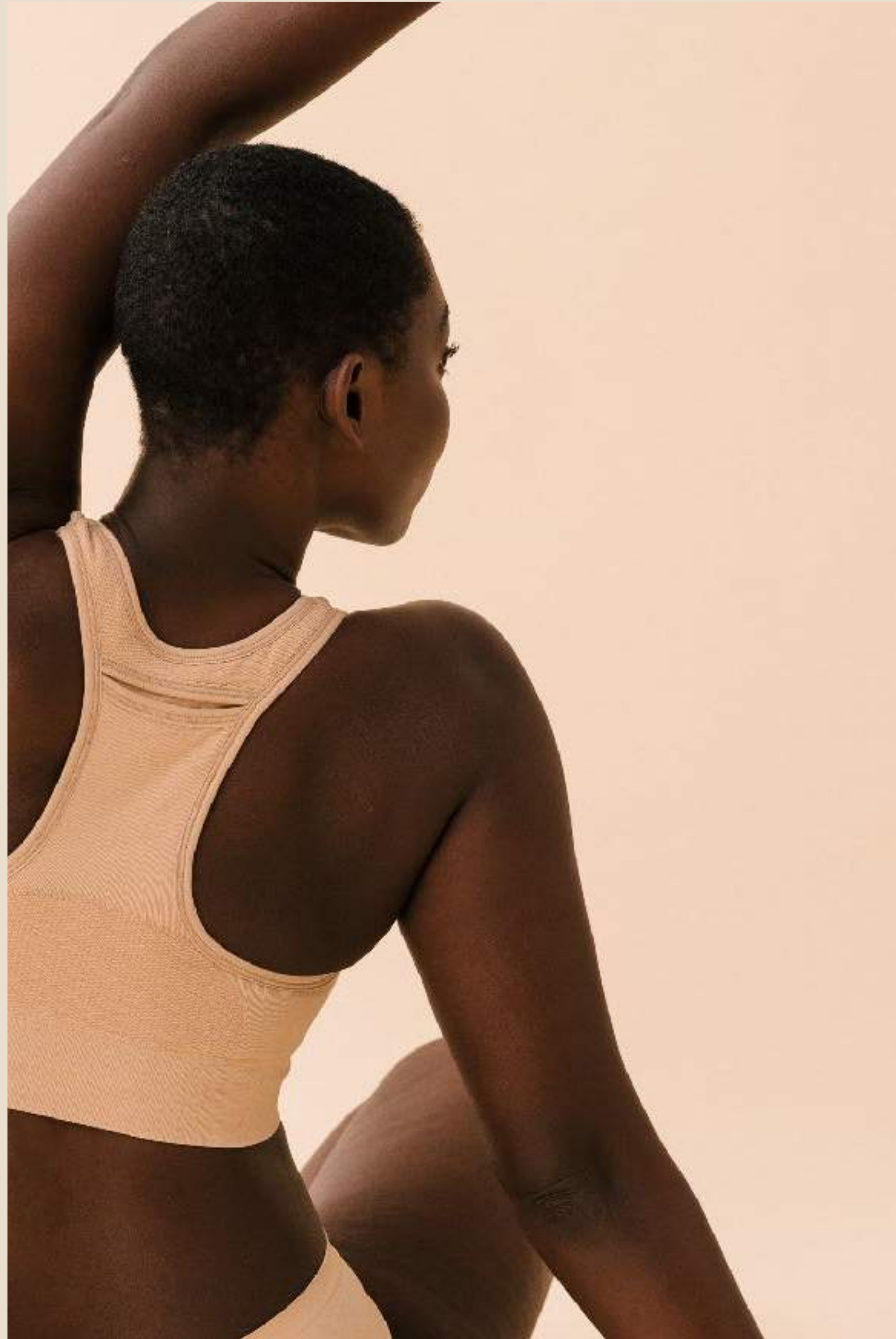








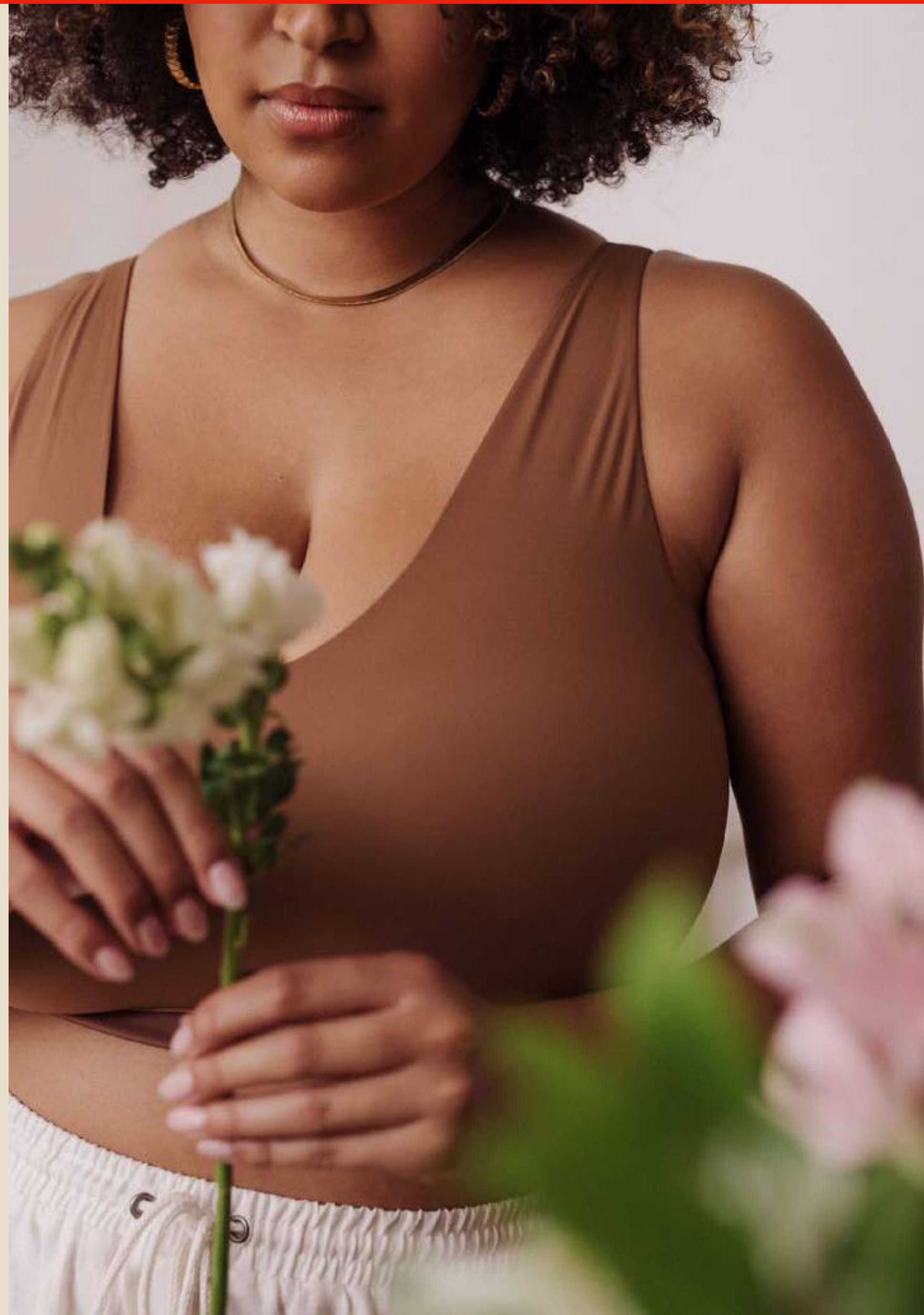






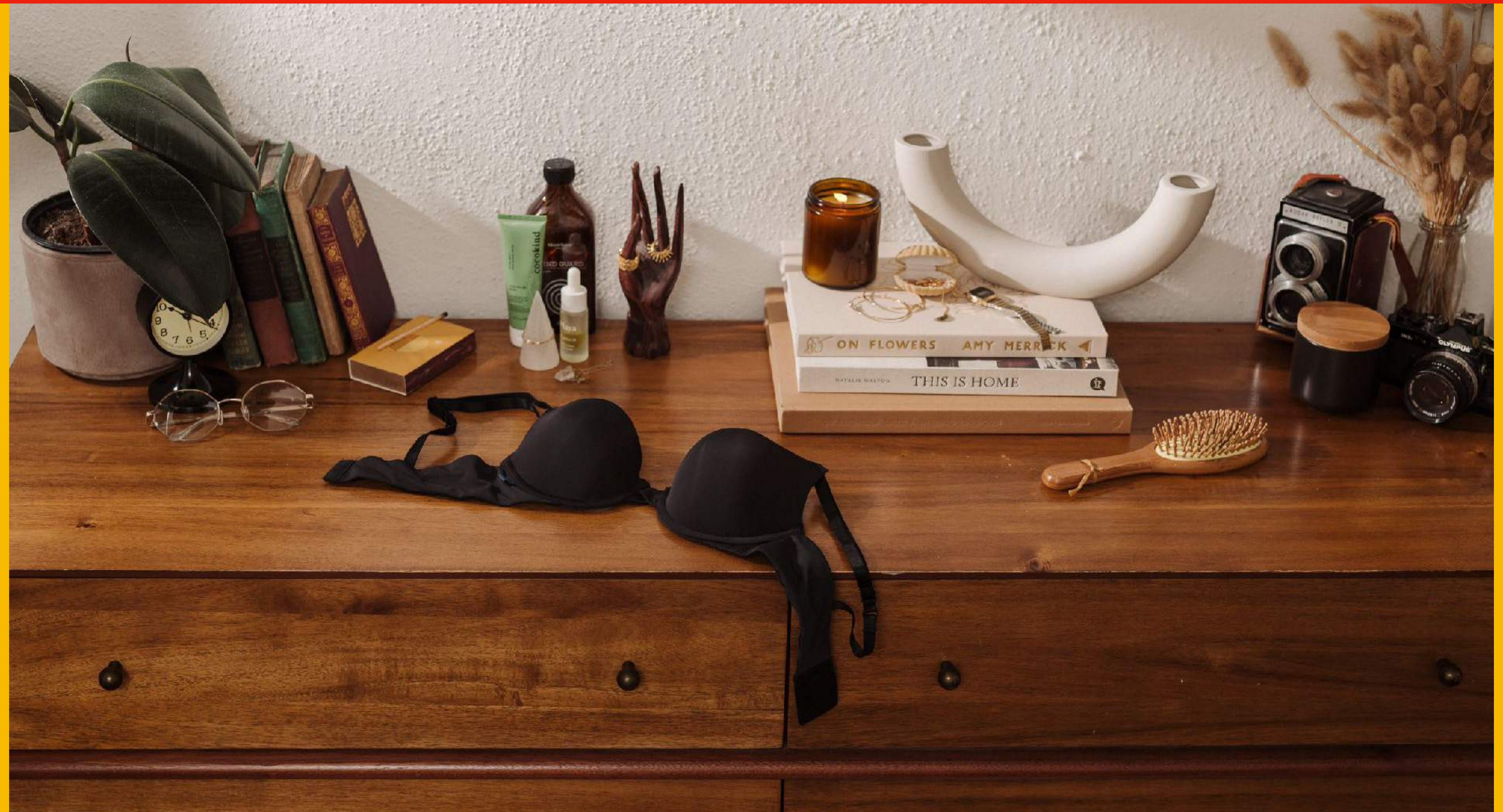




















**THE WONDERFUL WINE CO.**





2019 ROSE WINE VON DE FRANCE  
THE  
WONDERFUL  
WINE CO.  
CLEAN WINE  
MADE WITH ORGANIC GRAPES  
SUSTAINABLY-FARMED  
VEGAN-FRIENDLY  
HAVE  
A GLASS? — W — HAVE  
ANOTHER?  
TASTES LIKE MAGIC HOUR.  
BEING RIGHT AND BEATING THE HIGH SCORE.

2019 ROSE WINE VON DE FRANCE  
THE  
WONDERFUL  
WINE CO.  
CLEAN WINE  
MADE WITH ORGANIC GRAPES  
SUSTAINABLY-FARMED  
VEGAN-FRIENDLY  
HAVE  
A GLASS? — W — HAVE  
ANOTHER?  
TASTES LIKE MAGIC HOUR.  
BEING RIGHT AND BEATING THE HIGH SCORE.























**LOST POET WINE**

DIRECTED BY JESSEE FISH FOR WINC X LOST POET WINE — PHOTOGRAPHER BASIL VARGAS















DIRECTED BY JESSEE FISH FOR WINC X LOST POET WINE — PHOTOGRAPHER BASIL VARGAS















## SUMMER WATER















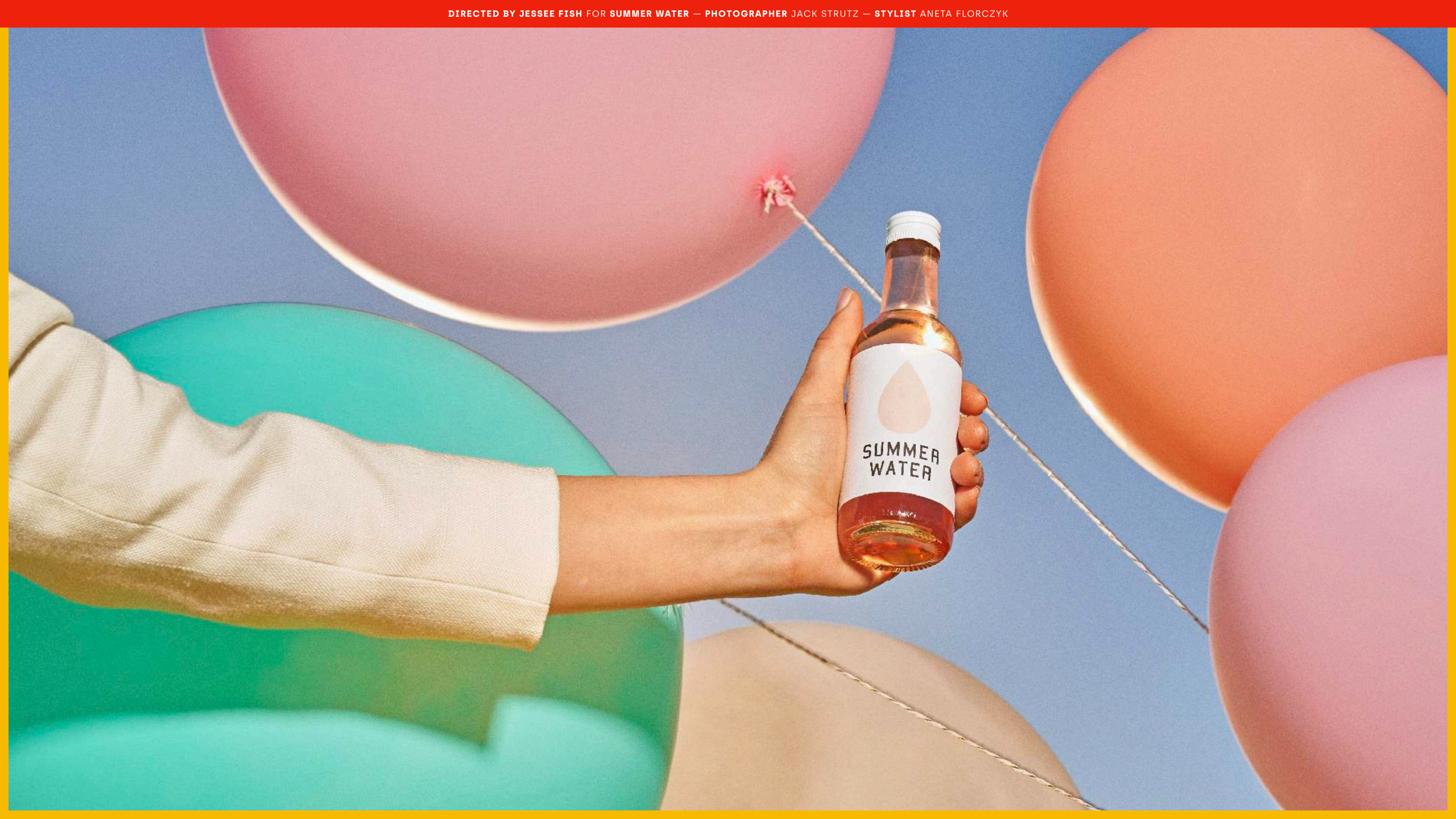




DIRECTED BY JESSEE FISH FOR SUMMER WATER — PHOTOGRAPHER JACK STRUTZ — STYLIST ANETA FLORCZYK







THAT'S ALL SHE WROTE



**IG** @JESSEEFISH

**WEB** JESSEEFISH.COM

**CONTACT** JESSEEFISH@GMAIL.COM